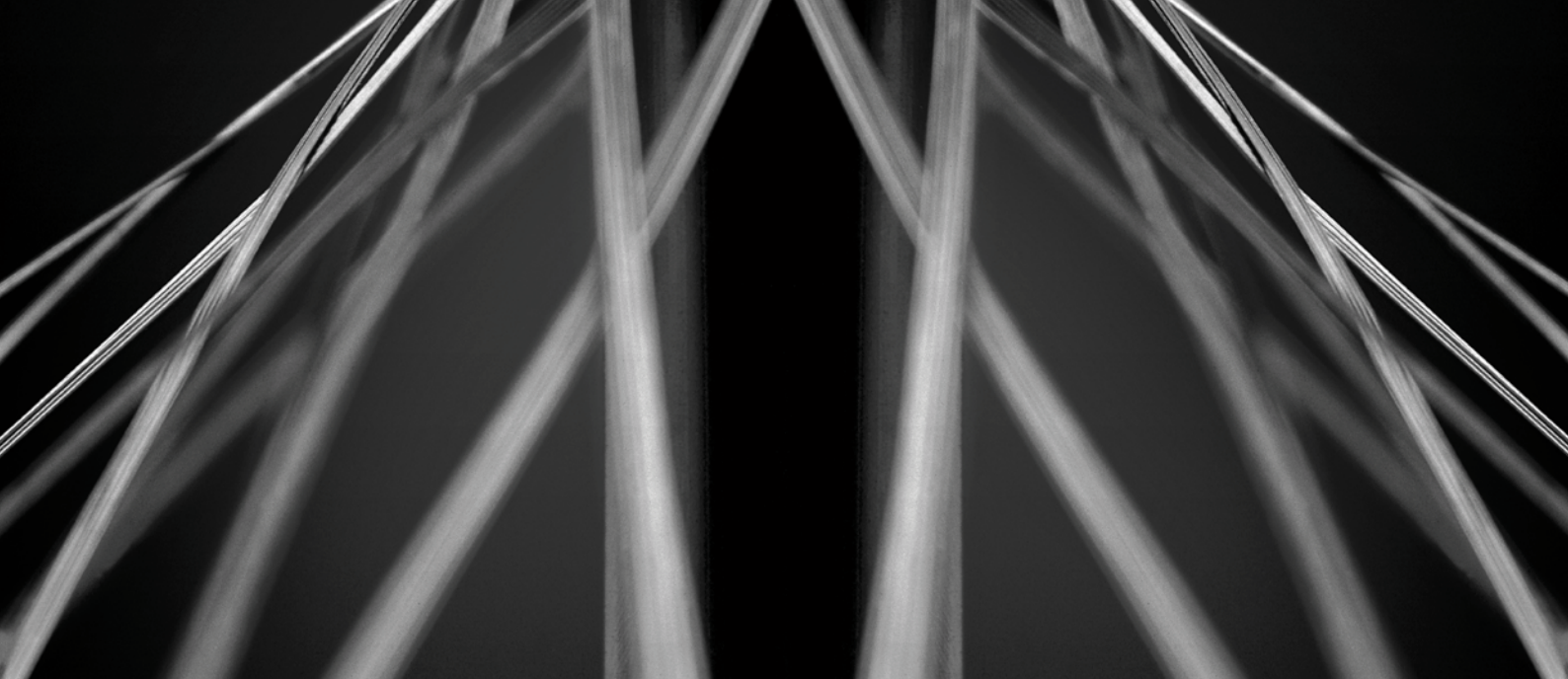


## Wire Applications Manufacturing braiding machines





Manufacturing braiding machines **Wire Applications**

Fluid conductors



Electrical conductors



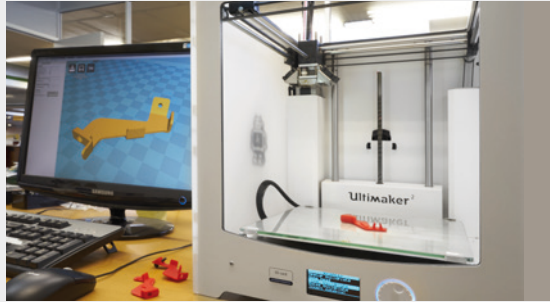
Auxiliary machines





## History: Growing in experience

Since 1942 **Ratera** has developed an important job in research and technological development in the braiding industry and its auxiliary machines.



## R&D:

### Technical office · Adaptability

Ratera keeps developing and improving constantly its products combining the highest technology in design using different computerized systems (CAD and CAM), with a deep knowledge in this field and all the requirements in the braiding industry.

## Production and assembly: offering solutions.

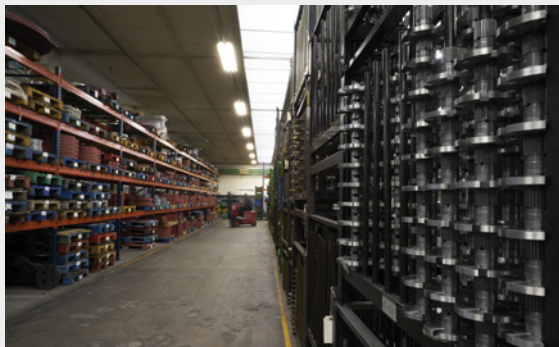
### At Ratera we offer a solution.

Thanks to the CAE system, we make dimensional simulations, budgets, cost analysis and production plans. Our printing technology 3D, provides a great versatility. Thanks of the process of implementing Lean Manufacturing, we achieve an optimal product.



### Worldwide shipping and logistics.

The worldwide size of **Ratera** is the key of its success: exporting the 90% of its production to more than 120 countries and more than 7000 customers. Manufacturing average of 2.500 machines per year.

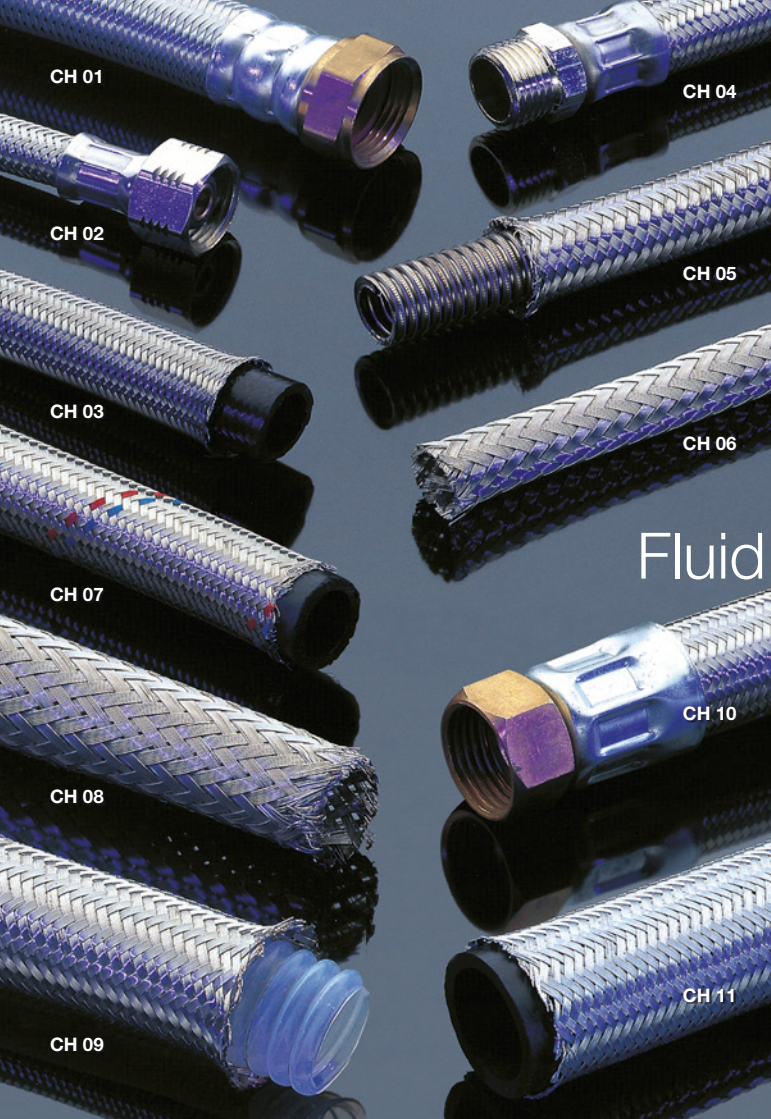


### Final product

The range of our products covers over 450 different models, **Ratera** tries to cover all the needs of the braiding industry. Its versatility allows to adapt its models to each customer requirements in particular.







## Fluid conductors



### 24/115

- Number of carriers: 24
- Gauge: 115 mm.
- Bobbin dimensions: Ø63x170 mm.
- Bobbin capacity: 465cm<sup>3</sup>.
- Motor power: 0,75 H.P.
- Horn gear r.p.m.: 180
- Carrier r.p.m.: 30



## 24/154

- Number of carriers: 24
- Gauge: 154 mm.
- Bobbin dimensions: Ø67x170 mm.
- Bobbin capacity: 494cm³.
- Motor power: 2 H.P.
- Horngear r.p.m: 130
- Carrier r.p.m.: 7,22



## 48/154

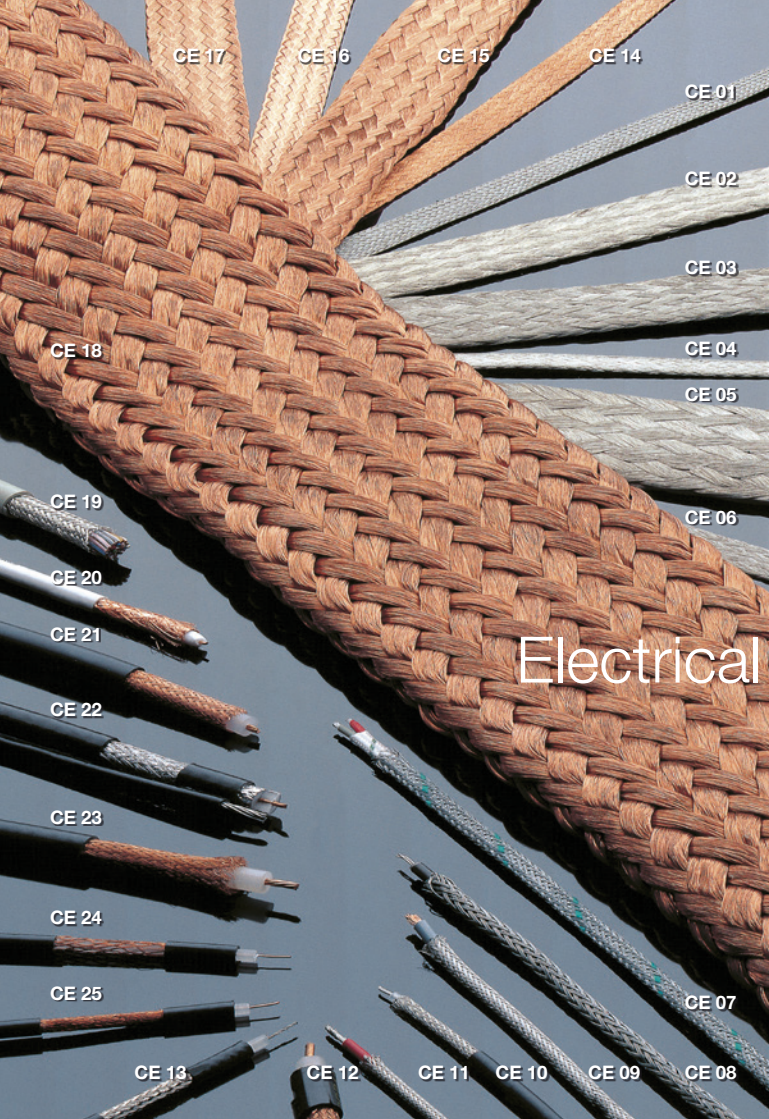
- Number of carriers: 48
- Gauge: 154 mm.
- Bobbin dimensions: Ø67x170 mm.
- Bobbin capacity: 495cm³.
- Motor power: 1,80 H.P.
- Horngear r.p.m: 85
- Carrier r.p.m.: 7



## 72/154 horizontal

- Number of carriers: 72
- Gauge: 154 mm.
- Bobbin dimensions: Ø67x110 mm.
- Bobbin capacity: 494cm³.
- Motor power: 3 motors of 4 H.P. each
- Horngear r.p.m: 130
- Carrier r.p.m.: 7,22





## Electrical conductors



**24/104**

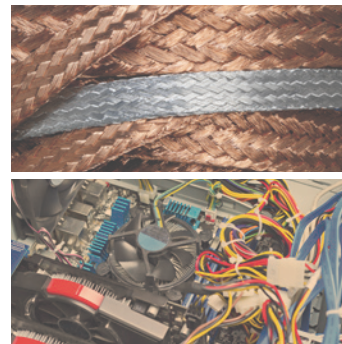
- Number of carriers: 24
- Gauge: 104 mm.
- Bobbin dimensions: Ø53x152 mm.
- Bobbin capacity: 289cm³.
- Motor power: 0,5 H.P.
- Horn gear r.p.m.: 240
- Carrier r.p.m.: 40





## 12/115

- Number of carriers: 12
- Gauge: 115 mm.
- Bobbin dimensions: Ø63x170 mm.
- Bobbin capacity: 467cm³.
- Motor power: 0,5 H.P.
- Horn gear r.p.m: 190
- Carrier r.p.m.: 63



# Auxiliary machines



## Pay off unit

- Pay off unit of 10 columns for 20 spools



## Semi-automatic winder 2PVLU/320

- 2 spindles
- Parallel winding
- Bobbin maximum diameter: 100 mm
- Bobbin maximum traverse: 320 mm
- General speed adjustment
- For a maximum number of 12 ends of 0,1 mm. coil Ø up to 0,45 mm.



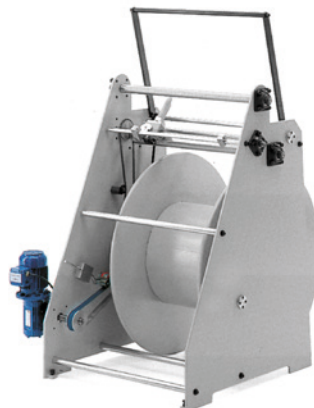
## Semi-automatic winder 4PVLU/330

- 4 spindles
- Parallel winding
- Bobbin maximum diameter: 80 mm
- Bobbin maximum traverse: 330 mm
- General speed adjustment
- Pitch adjustment from 0-11 mm
- Stop: by mass



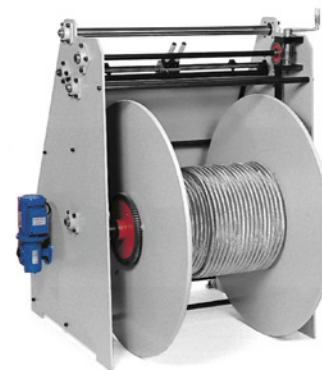
## Autonomous collector with an oscillating arm 800x400

- Spool Ø 800x400 mm.
- Capacity: 150.796 cm³.
- Including a reducer motor
- Nucleous bore diameter: 400 mm.
- Distributing system: by a distributor box
- Adjustable traverse from 50 mm. up to 400 mm.
- Adjustable pitch from 0 mm. up to 50 mm.



## Autonomous collector 800x400

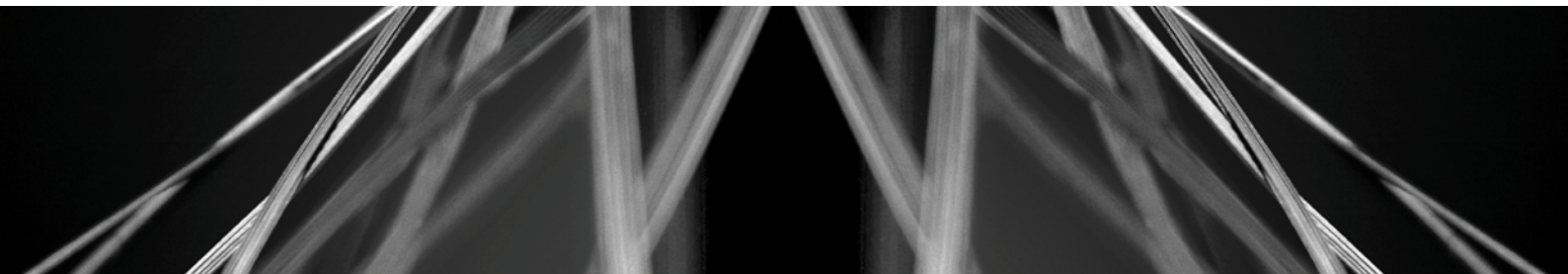
- Spool Ø 800x400 mm.
- Nucleous bore diameter: 400 mm.
- Including a reducer motor and a clutch
- Capacity: 150.796 cm³.
- Distributing system: by a distributor box
- Adjustable traverse from 50 mm. up to 400 mm.
- Adjustable pitch from 0 mm. up to 50 mm.



## Autonomous collector 1050x600

- Spool Ø 1050x600 mm.
- Nucleous bore diameter: 600 mm.
- Including a reducer motor and a clutch
- Distributing system: by a distributor box
- Adjustable traverse from 50 mm. up to 600 mm.
- Adjustable pitch from 0 mm. up to 50 mm.

## Wire Applications Manufacturing braiding machines



giobuses

NOTE: According to machinery directive 83/392 about safety for the European market, machines must be protected. However, in order to allow for a better display some of this catalog's illustration have been made without the mandatory protections. The company reserves the right to modify and improve the characteristics of its products without notice.

04/19



Your Braiding Industry

### Talleres Ratera SA

Av. dels Dolors, 13 · Apt. Correos (PO Box) 228

08243 Manresa · Barcelona · Spain

Tel. +34 93 878 49 50 · Fax +34 93 877 26 82

e-mail: [ratera@ratera.com](mailto:ratera@ratera.com)



[www.ratera.com](http://www.ratera.com)